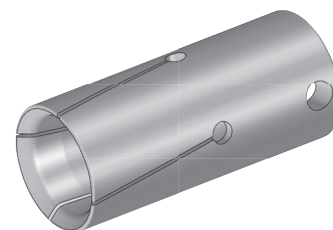
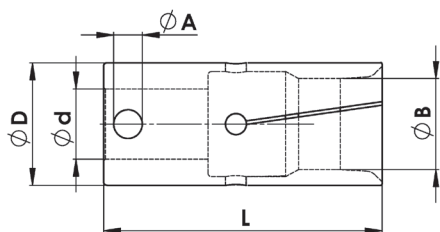


SPANNHÜLSEN für TOP AUTOMAZIONI / BAR FEED COLLETS for TOP AUTOMAZIONI



Bestell-Nr. Order-No.	D	d	L	A	B min.	B max.	stg. step
SHTA20	20	14	80	5	3,0	17,5	0,5
SHTA25	25	14	80	5	16,0	22,0	0,5
SHTA30	30	20	80	8	21,0	27,5	0,5
SHTA32	32	20	80	8	26,0	29,0	0,5
SHTA35	35	20	80	8	26,0	32,0	0,5
SHTA40	40	20	80	8	31,0	38,0	0,5
SHTA42	42	20	80	8	36,0	40,0	0,5
SHTA45	45	20	80	8	36,0	42,0	0,5
SHTA50	50	20	80	8	41,0	47,0	0,5
SHTA55	55	20	80	8	46,0	52,0	1,0
SHTA60	60	20	80	8	51,0	56,0	1,0
SHTA65	65	20	80	8	56,0	62,0	1,0

SPANNHÜLSEN für TOP AUTOMAZIONI / BAR FEED COLLETS for TOP AUTOMAZIONI Sonderlösungen / Special Solutions

Bestell-Nr. Order-No.	D	d	L	A	B min.	B max.	stg. step
SSHTA20	20	14	80	5	17,0	19,0	0,5
SSHTA25	25	14	80	5	21,7	24,0	0,5
SSHTA30	30	20	80	8	27,0	29,0	0,5
SSHTA32	32	20	80	8	29,0	31,0	0,5
SSHTA35	35	20	80	8	31,5	34,0	0,5
SSHTA40	40	20	80	8	37,0	39,0	0,5
SSHTA42	42	20	80	8	37,0	41,0	0,5
SSHTA45	45	20	80	8	42,0	44,0	0,5
SSHTA50	50	20	80	8	47,0	49,0	0,5
SSHTA51	51	20	80	8	49,0	50,0	0,5
SSHTA52	52	20	80	8	47,0	51,0	0,5
SSHTA55	55	20	80	8	52,5	54,0	0,5
SSHTA60	60	20	80	8	57,0	59,0	0,5
SSHTA65	65	20	80	8	62,5	64,0	0,5

Dünnwandige Spannhülsen auch als „Longlife“ lieferbar

Thin-walled Bar Feeder Collets also available in „Longlife“-type